

MHB 

Butch collectors of steel since 1661

Rembrandt Collection

Explore MHB's exclusive Rembrandt collection and experience the highest standard in surface treatments.

mhb.eu

Rembrandt Collection of exclusive finishes

1



Inspired by the great Dutch master of art, Rembrandt van Rijn, known for his masterpieces created during the same era when MHB was founded, we have curated the Rembrandt Collection. A distinct collection consisting of high-quality design finishes.

These exclusive finishes are typically reserved for luxury interiors & exteriors in the highest segment. They are expertly applied to the world's slimmest windows, doors, and facades and are suitable for exterior use in a C3 or C5 corrosive environment.

The Rembrandt Collection is crafted in MHB's exceptional in-house surface treatment facilities and made from genuine bronze, tin, manganese, and brass. Through various sanding, polishing, and patina techniques, we can achieve an almost limitless range of textures, structures, and colour effects.



Exterior finishes

2

Living Metal finishes

MHB's Living Metal finishes feature genuine metal surfaces, such as bronze, in their solid form, retaining the physical and optical properties of the chosen metal, resulting in a distinctive appearance. These characteristics can be further refined through sanding, polishing, patination, or oxidation.

MHB offers the Living Metal finishes without a sealing varnish, this allows the finishes to evolve to its maximum potential over time. As these finishes are applied by hand, each frame will be completely unique.

Dual Coat finishes

At MHB, we take pride in our meticulous hand-application of coatings, ensuring the utmost quality and enabling unparalleled customisation. Dual Coat finishes allow architects and interior designers to explore a distinctive design opportunity: selecting one powdercoat colour for the exterior appearance and another powdercoat or zinc-patina colour for the interior. Unlocking the potential for endless colour combinations.

Exterior: Powdercoat finish

In Europe, the most rigorous certification for the application of powdercoating to steel is Qualisteelcoat. This distinguished label operates within a closed system, necessitating certification for both the coating itself (ensuring optimal gloss, color retention, and resistance to corrosion) and the coater responsible for its application. All RAL colours can be applied as a high quality powdercoat finish.

Interior: Powdercoat finish or zinc-patina finish

MHB has developed two zinc-patina finishes in black or grey offering architects a striking interior finish option with the aesthetic appeal of zinc's distinctive evolving patina. The black and grey hues create a sophisticated and modern appearance. As the patina gradually develops over time, it adds a unique character, showcasing subtle variations in colour and texture.

Bespoke Metal finishes

After years of careful experimentation and extensive testing, MHB is proud to introduce a revolutionary new type of surface treatment. By combining the excellent protective properties of thermal zinc spraying by applying our Qualisteelcoat powder coat treatment and finishing the product with a wet paint treatment that adds a unique patina effect, we have created the Bespoke Metal finishes.

These finishes allow for an everlasting and unique patina effect, with the colour and effect completely customisable. Due to the rigorous protective treatments applied, these unique finishes are offered with C5 protection for highly corrosive environments.

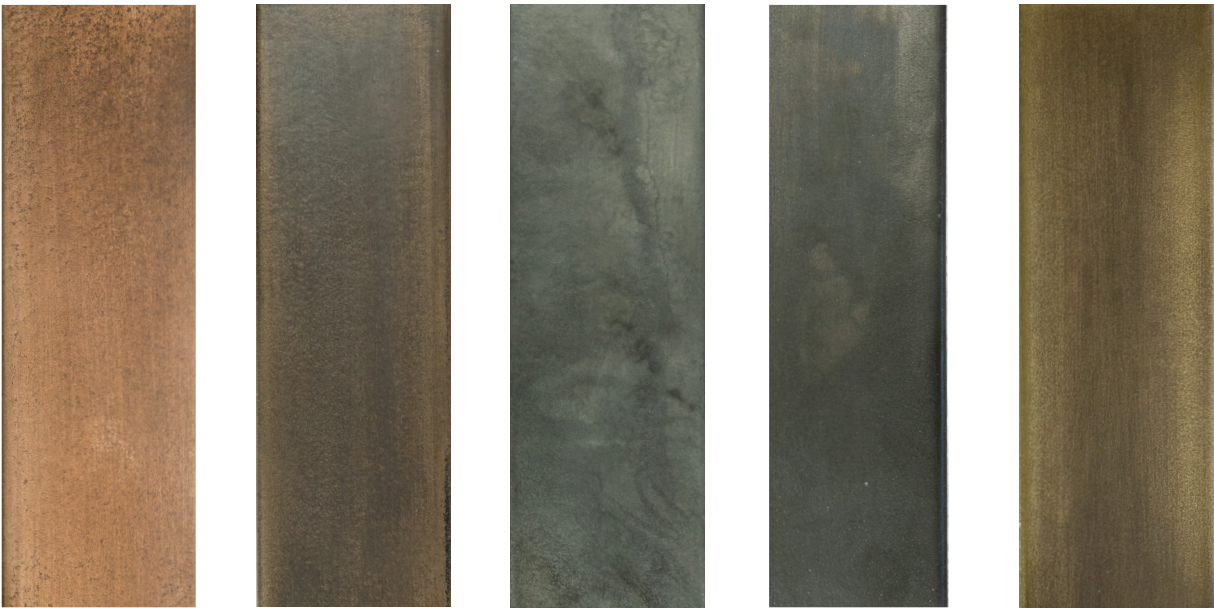
Dutch Masters of Steel since 1667

Rembrandt Collection - Exterior

Living Metal finishes



3



1 Light Bronze 2 Dark Bronze 3 Tin 4 Manganese 5 Brass

MHB's Living Metal finishes will naturally evolve over time, much like the solid metal would, resulting in unique variations in colour and texture among different frames. Our meticulous handcrafted processes of sanding, polishing, patination, and oxidation add to each frame's individual character, with minor differences in colour, colour effects, and texture being a part of their unique charm. For optimal results, MHB recommends using aluminium L-shaped or triangle-shaped glass stops for all configurations.

MHB offers two variations of the Living Metal finishes: one includes a double sealing primer as a finisher, and the other does not. The Rembrandt Collection sample case includes samples with the sealing primer. By default for projects, we offer our Living Metal finishes without a sealing primer allowing the metal surfaces to reach their maximum transformation potential over time.

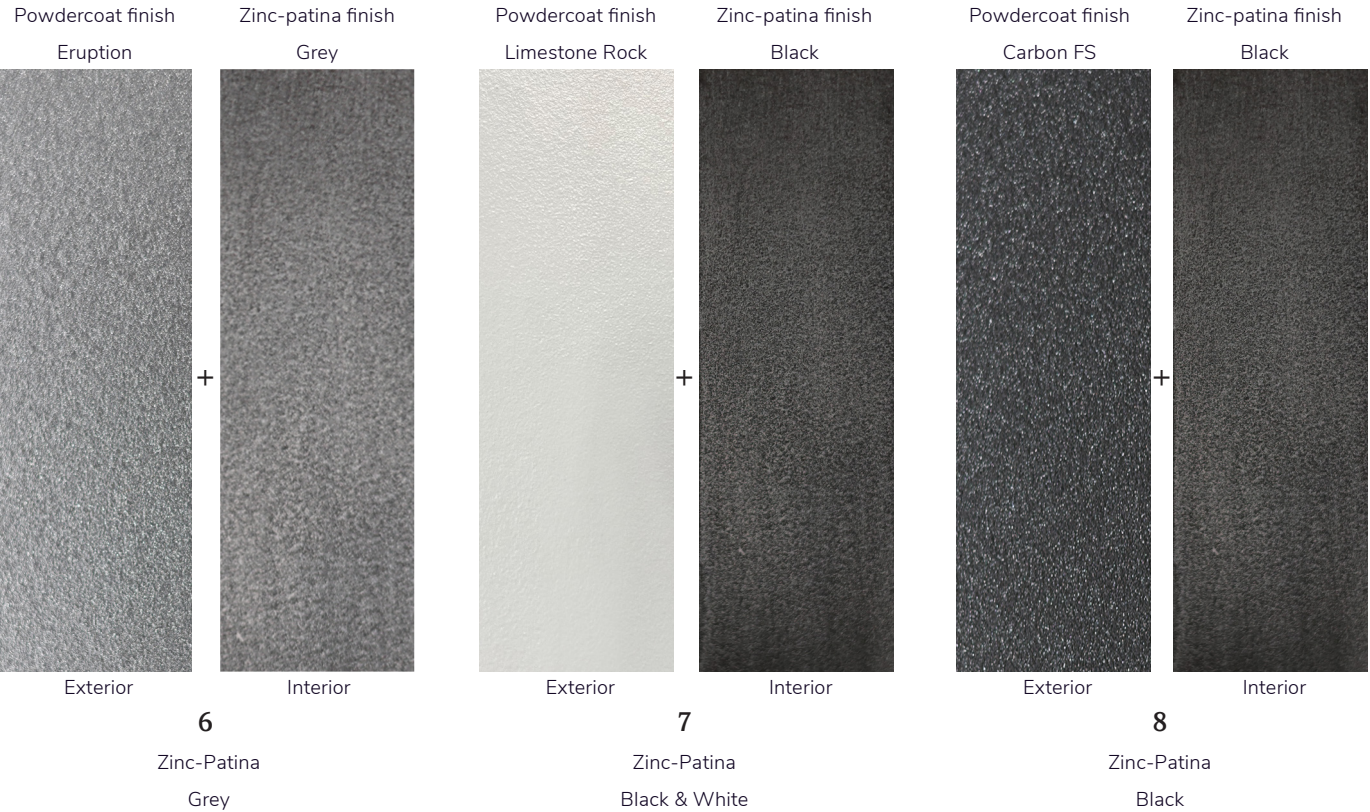


Rembrandt Collection - Exterior

Dual Coat finishes



4



MHB can offer a distinctive zinc-patina finish in grey and black. These finish options are suitable for the interior.

They can be combined into a dual coat finish with a zinc-patina finish on the interior side of the profile and high quality powdercoat finish on the exterior side of the profile, suitable for a C3 medium corrosive environment. This allows architects to explore a distinctive design opportunity: selecting one powdercoat colour and texture matching the exterior appearance and a black or grey zinc-patina colour for the interior design.

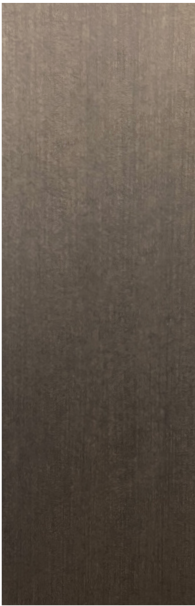
Dutch Masters of Steel since 1667

Rembrandt Collection - Exterior

Bespoke Metal finishes

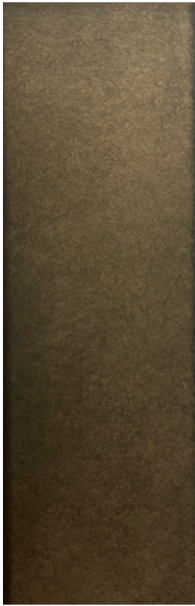


5



9

Brazed Steel



10

Scorched Black



11

Light Brass



12

Dark Brass

By combining the excellent protective properties of thermal zinc spraying, applying our Qualisteelcoat powder coat treatment, and finishing the product with a wet paint treatment that adds a unique patina effect, we have created a revolutionary new surface treatment: the Bespoke Metal finishes.

These finishes allow for an everlasting and unique patina effect, with the colour and effect completely customisable. Due to the rigorous protective treatments applied, these unique finishes are offered with C5 protection for highly corrosive environments.



Ensuring the highest quality through rigorous testing

6

MHB prides itself on providing the highest quality surface treatment, to ensure the best customer experience. A key aspect of our high quality is testing. MHB implements rigorous testing procedures to attain the highest quality finishes available, enabling MHB to create products that last for generations.

All MHB exclusive finishes have successfully undergone 3.000 hours of rigorous independent QUV-Testing and 720 hours of Salt Spray Testing, surpassing industry standards. Testing is performed according to the most stringent European quality norms (NEN-EN ISO 4892-3 and NEN-EN ISO 9227 NSS respectively).

MHB determines, based on the testing results obtained, whether the surface treatment meets our high standards and is suitable for use in either a C3 medium corrosive environment (applicable in urban and industrial areas with moderate pollution) or a C5 very high corrosive environment (Industrial areas with high humidity and aggressive atmosphere, and coastal areas with high salinity).

MHB never compromises on quality.

Dutch Masters of Steel since 1667



Dutch Masters of Steel
Since 1667